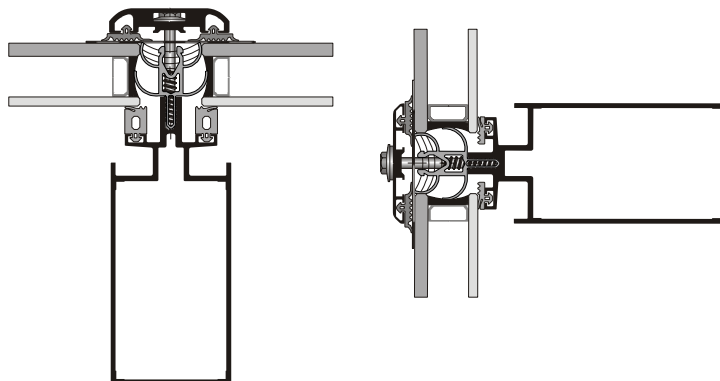


ALUMIL M10800 Skylight Alutherm

*Thermal-breaking system
for atriums and skylights,
with 55 mm column width*



Basic characteristics:

- ✓ Supports many different applications like pyramids, sky lights, casings etc.
- ✓ Thermal-break classification Gruppe 2.1.
- ✓ Provides structural solutions for producing multi-bezel solutions and finishes of drain pipes, which can be combined with the remaining construction.
- ✓ Supported by profiles for creating atriums of big dimensions, without any further mechanical support.
- ✓ The materials used are vertical and horizontal aluminium profiles, inox screws, and other means of connection, which offer great endurance in time and are not corrosive.
- ✓ The system cooperates perfectly with the M6 Curtain Wall system for the fabrication of complex structures, like curtain walls that end in skylights, domes etc.
- ✓ The system can also be combined with M10880 to produce folding extensions for skylights.

TECHNICAL SPECIFICATION OF PROFILES

Aluminum alloy	AlMgSi (EN AW 6060)
Hardness	12 Webster or 70 HB minimum
Minimum Powder Coating Thickness	75µm minimum
Profile thickness (min-max)	2,2 – 2,5 mm
Profile Geometry Control	EN DIN 12020-2 Compliant

TECHNICAL SPECIFICATIONS OF SYSTEM TYPOLOGIES

Basic system width	55 mm
Maximum moment of inertia (without supporting iron beams)	883 cm ⁴
Glazing supported	Single, double or triple, from 24 to 50 mm
Sealing	Perimetrical, with EPDM gaskets applied in two levels

Certifications:

- ✓ The design, the production process, and the quality control of all profiles produced by Alumil are certified with ISO 9001.
- ✓ The process of electrostatic powder coating is certified by QUALICOAT and RAL (GSB) in all plants operated by Alumil.