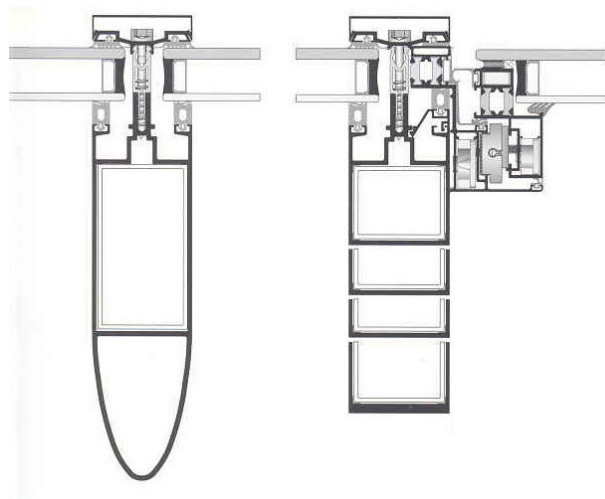


ALUMIL M6 Solar Standard Plus

Standard curtainwall product line

Basic characteristics:

- ✓ Standard curtainwall product line
- ✓ 55mm column and transom width
- ✓ Two-level sealing, using EPDM gaskets
- ✓ 25mm polyamide application for Gruppe 2.1 thermal insulation
- ✓ Option of constructing hopper windows and main entrances completely integrated in the façade
- ✓ Option of angular constructions, in both the internal and external sides of the façade
- ✓ Option of installing inox caps on the columns' pressure plates
- ✓ Excellent water outflow through the drainage channels of columns
- ✓ Supports constructions with structural appearance



TECHNICAL SPECIFICATIONS OF PROFILES	
Aluminum alloy	AlMgSi (EN AW 6060)
Hardness	12 Webster or 70 HB minimum
Minimum Powder Coating Thickness	75µm minimum
Profile thickness (min-max)	1,8 – 5,0 mm
Profile Geometry Control	EN DIN 12020-2 Compliant

TECHNICAL SPECIFICATIONS OF SYSTEM TYPOLOGIES	
Basic column and transom width	55 mm
Maximum Moment of Inertia sustained (without metallic beam support)	Up to 887,69 cm ⁴
Glazing supported	Single, double or triple, up to 52 mm
Sealing	Two-level sealing, using EPDM gaskets

Certifications:

- ✓ The design, the production process, and the quality control of all profiles produced by AluMIL are certified with ISO 9001.
- ✓ The process of electrostatic powder coating is certified by QUALICOAT and RAL (GSB) in all plants operated by AluMIL.
- ✓ M6 SOLAR STANDARD PLUS is certified by the globally-acknowledged German institute IFT ROSENHEIM, regarding its wind-pressure sustainability and sealing.